



For Use With Xtreme Garage Door Openers

⚠ WARNING

To Prevent SERIOUS INJURY or DEATH:

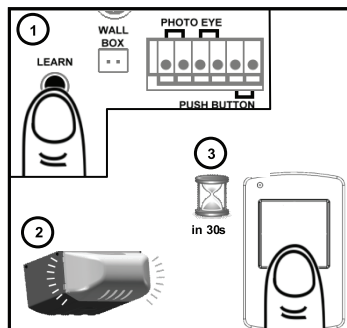
- Keep transmitter and battery out of reach of children.
- NEVER permit children to access the Push Button nor remote transmitters.
- Operate door ONLY when it is adjusted properly with no obstructions to door travel and is in clear sight.
- ALWAYS keep a moving door in sight until completely closed. NO ONE should cross the path of a moving door.

To reduce risk of fire, explosion or electric shock:

- DO NOT short circuit, recharge, disassemble or heat battery
- Replace with 23AE 12V batteries ONLY. Dispose of batteries properly.



Setting Transmitter



To Add Transmitter(s):

1. Follow Fig.2 to add a transmitter. Press "LEARN" button on the rear control panel, the courtesy light will glow with click*. The unit is ready to accept a transmitter in the coming 30 seconds.
2. Press any button on the transmitter within 30 seconds.
3. Courtesy light flashes twice indicating transmitter is stored in memory**.

Up to 20 transmitters (including wireless keypad codes) can be added to the unit by repeating the above procedures.

If more than 20 transmitters are stored, the previously stored one from the very beginning will be replaced, i.e. the 21st transmitter replaces the 1st stored one.

* If the courtesy light is already on it will flash once and stay steadily for 30 seconds.

** If a transmitter is not accepted, the courtesy light will stay on for 30 seconds, flashes 4 times and then stay on for 2-1/2 minutes. Replace transmitter.

Removing ALL Transmitter(s):

To remove ALL transmitters from memory, press and hold the "LEARN" button above 5 seconds. The courtesy light will then 7 times, indicating ALL transmitters have been removed from memory.



Replacing Transmitter Battery:

When the battery of transmitter is low, dimmed indicator is observed. To replace battery, remove the battery cover from the transmitter, replace the battery with a 23AE 12V battery with direction shown.

This device complies FCC Rules for HOME OR OFFICE USE. Operation is subject to the following two conditions: (1) this device may not cause harmful interference, and (2) this device must accept any interference received, including interference that may cause undesired operation.